

Registration and Travel Costs

Registration of lecture presenters is unnecessary since you have all agreed to participate. The cost for your travel and accommodation (up to 5 nights) will be covered by the organizers. We will also be able to cover at least some of the travel costs for one of your students/ co-workers accompanying you. There will be no participation fee for the symposium.

Travel to Dresden

There is a limited number of direct international flight connections to Dresden Airport (Dresden-Klotzsche). Moreover, Dresden Airport is frequently served via the major international airports in Frankfurt, Munich, and Dusseldorf. Furthermore, there are convenient train and bus connections to the airports Leipzig-Halle (ca. 1 ¼ hours), Berlin (ca. 2 ¼ hours), and Prague (ca. 2 ¾ hours). For trains and buses, see www.bahn.de and www.busliniensuche.de, respectively.

Accommodation

We will reserve hotel rooms near the conference site for all lecture presenters from outside Dresden. All other participants should contact Ms Nora Fröhlich in case they need help with hotel reservation.

Detailed information on the symposium programme will be sent by e-mail and also announced on the Nanomee website in Fall 2019!

Looking forward to welcome you in Dresden,

Nils Kröger & Eike Brunner

Contact

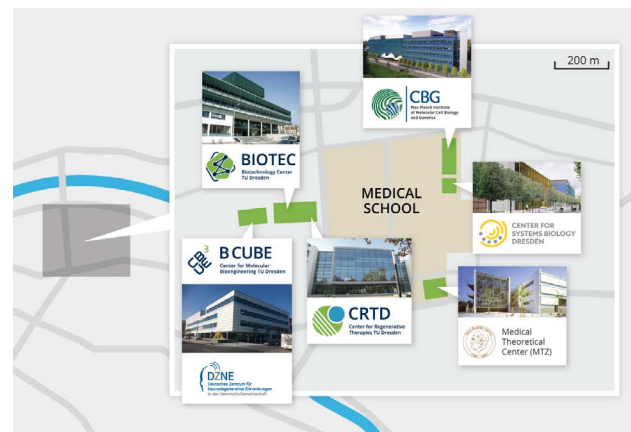
B CUBE - Center for Molecular Bioengineering

B CUBE - Center for Molecular Bioengineering was founded in 2008 as a Center for Innovation within the initiative „Unternehmen Region“ of the German Federal Ministry of Education and Research (BMBF). B CUBE research focuses on the investigation of living structures from the macroscale down to the nanometer level, translating the ensuing knowledge into innovative methods, materials and technologies.

Postal address:

B CUBE Center for Molecular Bioengineering
Technische Universität Dresden
Tatzberg 41
01307 Dresden, Germany

<http://www.tu-dresden.de/bcube>



NANOMEE Symposium on Biomineralization

Dear colleagues,

we are very grateful that you have accepted our invitation to participate in the upcoming Nanomee Symposium on Biomineralization that will take place in

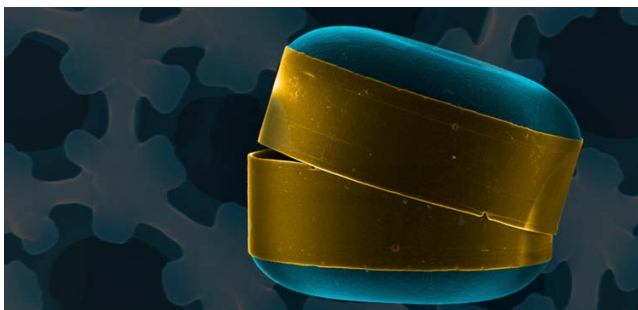
Dresden (Germany) from March 29 until April 2, 2020

This announcement as well as all subsequent information will also be available at

<http://www.nanomee.de/symposium>

Symposium Scope

This symposium is organized by the DFG funded Research Unit "Nanopatterned Organic Matrices in Biological Silica Mineralization" (FOR 2038 "Nanomee"; www.nanomee.de). This event will mark the successful completion of the Nanomee Research Unit, and will be devoted to analysis of the structure and chemical composition of biominerals as well as the understanding of their biomorphogenesis. Furthermore, materials science aspects of biominerals and biomimetic approaches to mineralization experiments will also be covered.



Symposium Venue

The symposium will take place at the Center for Molecular and Cellular Bioengineering (CMCB), TU Dresden. Lectures will be held in the Auditorium (left) in the ground floor of the CRTD building (Fetscherstraße 105, 01307 Dresden). Poster sessions will take place in the B CUBE building (Tatzberg 41; 200 m walking distance from CRTD).

Symposium Program and Participation

The symposium will include lectures as well as poster sessions. The following colleagues have agreed to present a lecture:

Marc Baldus (Uni Utrecht, NL), **Luca Bertinetti** (MPI-CI and TU Dresden, GE), **Colin Brownlee** (Marine Biology Association, UK), **Eike Brunner** (TU Dresden, GE), **Helmut Cölfen** (Uni Konstanz, GE), **Lucio Ciacchi** (Uni Bremen, GE), **Giovanni Cuniberti** (TU Dresden, GE), **Jim DeYoreo** (PNNL, US), **Gary Drobny** (Uni Washington, US), **John Evans** (NYU, US), **Lara Estroff** (Cornell Uni, US), **Peter Fratzl** (MPI of Colloids and Interfaces, GE), **Assaf Gal** (Weizmann Institute, IL), **Julian Gale** (Curtin Uni, AU), **Armin Geyer** (Uni Marburg, GE), **Pupa Gilbert** (Uni Wisconsin-Madison, US), **Stefan Görlich** (TU Dresden, GE), **Jeff Grey** (Johns-Hopkins Uni, US), **Keren Kahil Guterman** (Weizmann Institute, IL), **John Harding** (Uni Sheffield, UK), **Anne Jantschke** (TU Dresden, GE), **Derk Joester** (Northwestern Uni, US), **Stefan Kaskel** (TU Dresden, GE), **Arash Komeili** (UC Berkeley, US), **Nils Kröger** (TU Dresden, GE), **Uwe Maier** (Uni Marburg, GE), **Frédéric Marin** (Uni Bourgogne, FR), **Fiona Meldrum** (Uni Leeds, UK), **Carl Modes** (MPI of Molecular Cell Biology and Genetics, GE), **Carole Perry** (Uni Nottingham-Trent, UK), **Boaz Pokroy** (Technion, IL), **Michael Schlierf**

(TU Dresden, GE), **Asher Schmidt** (Technion, IL), **André Scheffel** (MPI of Molecular Plant Physiology, GE), **Dirk Schüler** (Uni Bayreuth), **Andrej Shevchenko** (MPI of Molecular Cell Biology and Genetics, GE), **Nico Sommerdijk** (Eindhoven Institute of Technology, NL), **Eli Sone** (Uni Toronto, CA), **Claudia Steinem** (Uni Göttingen, GE), **Steve Weiner** (Weizmann Institute, IL), **Ingrid Weiss** (Uni Stuttgart, DE), **Igor Zlotnikov** (TU Dresden, GE).

All lecture presenters are invited to bring up to two PhD students/ co-workers to the symposium, who are each strongly encouraged to present their biomineralization-relevant research as a Poster. If more than two PhD students/ co-workers from the same group are interested to participate, please contact us (see below). We will provide additional participation slots on a first come-first-serve basis until the capacity limit is reached. The lecture presenters are kindly requested to provide us with the names and contact data (e-mail addresses) of their participating PhD students/ co-workers.

Please send these data via e-mail to:

Ms. Nora Fröhlich (Assistant to Prof. Nils Kröger)

B CUBE Center for Molecular Bioengineering
Technische Universität Dresden
Tatzberg 41
01307 Dresden, Germany
E-Mail: nora.froehlich@tu-dresden.de
phone: +49-351-463-43031
fax: +49-351-463-40322
web: <http://www.tu-dresden.de/bcube>